




**River to River Greenway
Natural Resources Management Plan
Phase III – Final Draft Review**

**Christian Klatt
Natural Resources Specialist**

Planning Commission – September 25th 2020

1

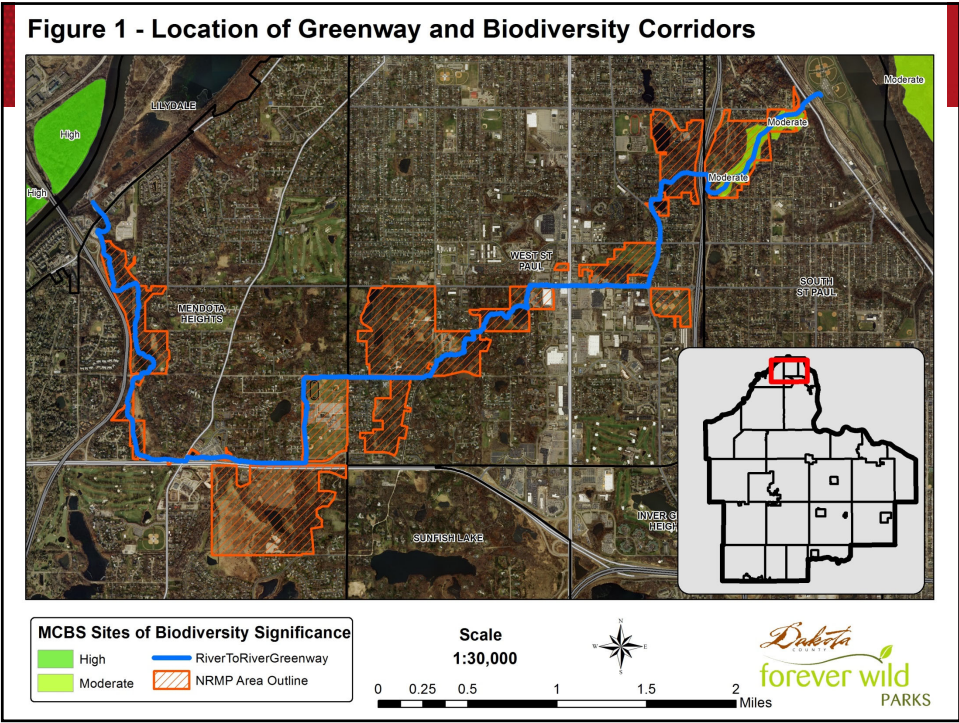


Outline

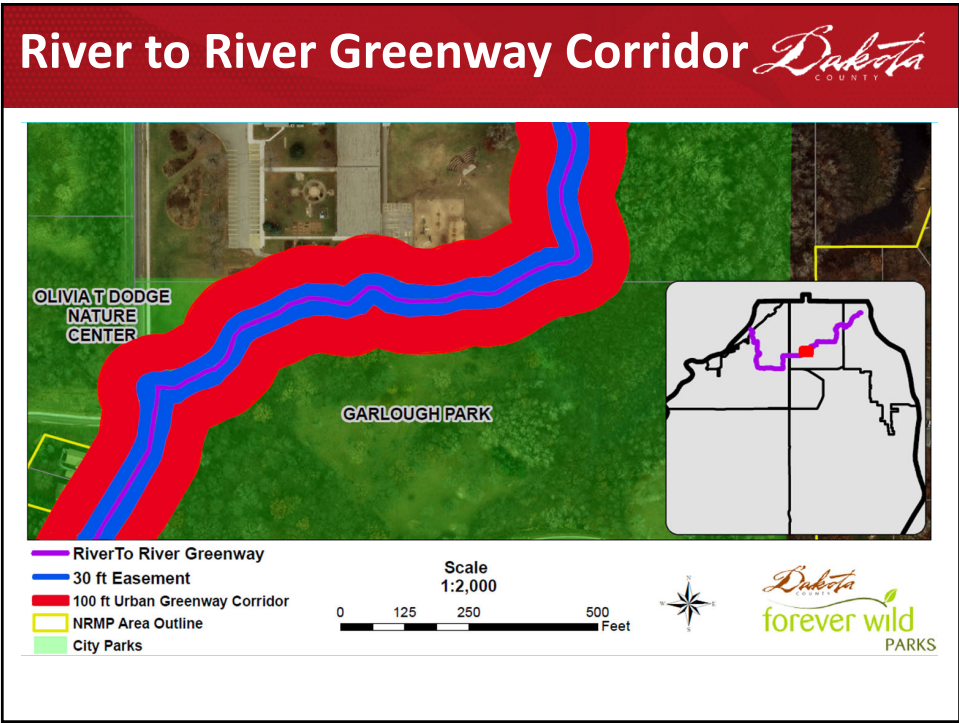
Dakota
COUNTY

Plan Review
Summary of Public and Stakeholder Commentary
Request Recommendation to Adopt Plan

2



3



4

Greenway Restoration Cost-Share

Greenway Roles and Responsibilities	30 foot Trail Easement	100 – 300 foot Greenway Corridor	Natural Lands Beyond Corridor
Grant Match Cost Share	County	County and Landowner have equal cost share (50/50).	County/Landowner cost share to be determined by Land Conservation Plan.
Restoration Project Management	County	County/Landowner Partnership.	Landowner. County may assist as determined by Land Conservation Plan.
Maintenance	County	County. Landowner may assist.	County/Landowner cost share to be determined by Land Conservation Plan.

5

Comments - Public Review Period

Public Review period was conducted from July 15-August 31, 2020

Public engagement during the review period consisted of the following:

- Posting the draft plan on the County's website
- Reaching out to cities and other stakeholders via meetings, emails
- Public Open House

Changes to the document occurred as a result of the comments, and are highlighted in yellow in the draft plan

6

Comments – Public Open House



An Open House was held on Thursday, August 6, 2020

- 18 people attended, plus 3 Commissioners and 3 staff
- The plan was summarized in a PowerPoint presentation
- Response to the plan was positive and attendees were supportive.
- There were **5** poll questions asked of attendees during the presentation. Results are shown in **Appendix H, p. 166** of the plan.

7

Comments – Public Open House



Summary of Poll Questions

- Most attendees were regular users of the Greenway
- Attendees were largely in support of proposed Natural Resource improvements along Greenway
- Attendees felt the County's primary role in managing natural resources were creating additional habitat for wildlife and maintaining aesthetics, with invasive species and water quality as additional considerations
- There was unanimous support for the County's role in assisting other public landowners to implement restoration.

8

Comments - Public Review Period



Individual Public and Stakeholder Comments

- The following summarizes comments from **Dakota Soil and Water Conservation District (Dakota SWCD)** and **Lower Mississippi Watershed Management Organization (LMWMO)** had the following comments:
 - Consider adding a sub watershed assessment study that could address particular stormwater management, wetland restoration, and other water quality projects within and beyond the NRMP Area Outline

9

Comments - Public Review Period



Individual Public and Stakeholder Comments

- **Dakota SWCD and LMWMO Comments Cont.**
 - Streambank project potential in Valley Park to be identified in 2021 study, opportunity for County assistance
 - Additional information needed for restoring hydrology in ditched wetlands
 - Consider wider scope of restoration activities in Simon's Ravine to address stream erosion
 - Add surface waters, streams, lakes, ponds and riverine systems to water considerations

10

Comments - Public Review Period



Individual Public and Stakeholder Comments

- **Dakota SWCD and LMWMO Comments Cont.**
 - Add policy for additional stormwater BMPs when trail sections are re-constructed
- **ISD197 staff and Mendota Heights Master Gardeners** provided comment on particular regions for choosing alternative future vegetative cover on School District Lands

11

Next Steps



Physical Development Committee, October 13

Plan Adoption, October 20, 2020

12

Next Steps



Action Requested:

Recommendation to the County Board for the Adoption of the River to River Greenway Natural Resource Management.

13

Discussion Questions



1. Was the County's response to public and stakeholder comments sufficient?
2. Does this initial Greenway NRMP set a desirable standard template for future NRMPs?
3. How do you envision this Plan working with the Land Conservation Plan to guide cost share in contiguous natural spaces outside the designated County Greenway Corridor?

14